



SUPPLEMENTARY REGULATION

FIM INTERNATIONAL SIX DAYS OF ENDURO (ISDE)

ARGENTINA – SAN JUAN

6-11 November 2023

IMN 401/01

WORLD CHAMPIONSHIP FOR NATIONAL TEAMS
FIM World Trophy
FIM Junior World Trophy
FIM Women's World Trophy

WORLD CUP
FIM Club Team Awards

1. ANNOUNCEMENT

The **Local Organiser (+Eventos)** in collaboration with the **Fédération Internationale de Motocyclisme (FIM)** will organise the 2023 FIM International Six Days of Enduro (ISDE 2023 Argentina) on behalf of the **Confederacion Argentina de Motociclismo Deportivo (CAMOD)**.

The event will be held in accordance with the FIM Sporting Code together with relevant appendices, including other Codes and Regulations FIM. These Supplementary Regulations and any final instructions are approved by Race Direction and the FIM Stewards Panel.

The event will be held on **6-11 November 2023** at the **Villicum Circuit** in the city of **Albardón, San Juan, Argentina**.
GPS (Paddock entrance) : -31.3982552, -68.5674934 / <https://goo.gl/maps/Tnk9dbz3Cs31Vyji9>

Access:

Airport:	Domingo Faustino Sarmiento International Airport - San Juan	By car:	31KM
Airport:	Jorge Newbery Int. Airport- Bs As	By car:	1131 km
Airport:	Ezeiza International Airport- Bs As	By car:	1134 km

From Buenos Aires :	National Route 7, NR 147, NR 20
From Córdoba:	National Route 20

2. OPENING HOURS OF THE ISDE SECRETARIAT

ISDE Secretariat will be located at the San Juan Villicum Circuit, near the paddock and will be open on 31 October 2023, from 9:00 to 18:00 and the following days according to the official time schedule.



3. REGISTRATION PROCESS AND ENTRIES

The registrations will be made only via the ISDE website (www.fim-isde.com), "Registration".

The pre-registrations will be considered only if the payment of 50% of the entry fee has been done according to the FIM regulations.

Step 1		
5-30 April 2023	MOTO CLUBS CTA Registrations	Each Moto Club Representative creates a profile on the Registration Platform specifying its national Federation (FMN) and the number of Club Team it wants to register.
Step 2		
1-22 May 2023	RIDERS CTA Registrations	Each individual rider must sign in on the Registration Platform, create a profile by choosing the FMN, the Moto Club and the Club Team Awards he/she wants to join.
Step 3		
23 May-6 June 2023	MOTO CLUBS CTA Team compositions	The Moto Club must approve or decline all the affiliation requests with its team(s) to finalise the pre-registration process.
Step 4		
7 June-2 July 2023	NATIONAL FEDERATIONS 1st payment	Team compositions of the Moto Club are subject to FMN approval. If a change is required, the FMN contacts the Moto Club and the Moto Club makes the update.
		FMN'S pre-register their World Trophy Teams (WT, JWT, WTT).
		Payment of 50% of the registration fees by the FMN to the Local Organiser.
Step 5		
3 July-31 August 2023	NATIONAL FEDERATIONS 2nd payment	The FMN representative fully complete the registration and bring changes to its World Trophy team(s) and CTA Teams if needed.
		Payment of the remaining 50% of the registration fees by the FMN to the Local Organiser

Also, in order to identify the payment of the entry fees, it is **COMPULSORY** to enter the following data during your bank transfer: **FMN + NAME + ISDE 2023 + EMAIL (of the person who has done the bank transfer)**.

Payment details: to obtain payment details please refer to info@maseventos.com.ar

The Federations (FMNs) have to support the costs for the bank transfers and the exchange costs. The Local Organiser has to be credited with the entry fees amounts below:

Teams	Total entry fee per rider (in EUR)	50% of the entry fee per rider (in EUR)
FIM World Trophy and Junior Trophy	EUR 1,050.00	EUR 525.00
FIM Women Trophy	EUR 1,050.00	EUR 525.00
FIM Club Team Awards or Individual (Men)	EUR 1,050.00	EUR 525.00
FIM Club Team Awards or Individual (Women)	EUR 1,050.00	EUR 525.00



Deadline for pre-registration paid: 2 July 2023

After this deadline, the FMNs that will not have paid the pre-registration amount or FMNs wishing to add teams over its pre-registration quota (see below) will have to pay the total entry fee (100%) before **31 August 2023**

The Federations will receive by e-mail the teams number accepted by nation. In case of rejection of riders and teams, the pre-paid 50% entry fee will be refunded, within 14 days after the rejection.

ENTRIES:

THE FIM WORLD TROPHY (WT)

Each FMN may enter one national WT team composed of **four riders**. Each of these riders must be holder of a passport of the country which he represents.

THE FIM JUNIOR WORLD TROPHY (JWT)

Each FMN may enter one national JWT team composed of **three riders**. Each of these riders must be under the age of 23 years old (at 1 January 2023 and holder of a passport of the country which he represents.

THE FIM WOMEN'S WORLD TROPHY (WWT)

Each FMN may enter one national WWT team composed of **three women riders**. Each of these riders must be holder of a passport of the country which she represents.

THE FIM CLUB TEAM AWARDS (CTA)

Each FMN may enter one or more CTA team(s) composed of **three riders**. Each of these riders must be nominated by a bona fide moto club or FMN and must be holder of a passport of the country which he/she represents. They may also be of different nationalities but under the same FIM Continental Union. In such case, the FMN of each rider must give its approval and the CTA must be entered by the FMN of one of these riders.

The maximum number of entries is 500 riders.

A rider registration is fully confirmed when the FMN has paid 100% of the registration fee that must be effective the latest at the deadline date for payment above mentioned: 31 August 2023.

According to the art. 061.33 of the 2023 FIM ISDE Regulations, the following principles apply:

- If an FMN cancels a pre-registration in writing before **31 August 2023** then the Local Organiser will keep 25% of the total registration fee and refund the remaining 25%, the latest one month after the written demand has been made.
- If an FMN cancels a registration after **31 August 2023**, then the Local Organiser will keep 100% of the amount paid by the FMN.
- As long as an FMN has paid 100% of the amount of the registration fee, the FMN has the possibility to replace a rider by another until the last day before the race.

For all payments done after **31 August 2023**, an extra EUR 50,00 per rider registration concerned by the late payment will be charge to the FMN.

Contact for the entries:

Verónica AMAYA

+54 9 351 5 50 20 50

info@maseventos.com.ar



4. STANDS FOR HOLDERS OF FIM LICENCES FOR MANUFACTURERS

The holders of FIM licenses for manufacturers and accessories, who are interested on stands at the paddock area, must submit the application form in accordance with FIM rules stating the dimensions of the required area. These applications must be submitted by **6 July 2023** to: fim.marketing.consultant@gmail.com

5. PRESS CENTER AND MEDIA ACCREDIATION

The Media Accreditation process for the 2023 FIM ISDE will open from **9 August 2023** at <https://fim-isde.com/press-accreditation/>

The Press Center will be located at **San Juan Villicum Circuit** and the media will be able to collect their accreditation at the Secretariat Office.

The schedule of the press room will be as follow:

Date	From:	To:
2-5 November 2023	09:00	19:00
6-10 November 2023	07:30	21:30

FIM ISDE Communication Manager:
Isabelle LARIVIERE
+41 79 874 02 93
isabelle.lariviere@fim.ch

FIM ISDE Press Coordinator
Isalen COOPER
+44 7765 785811
isalen.cooper@fim.ch

Local Press Coordinator:
Belén OTERO
+54 9 11 6663-6706
prensa@maseventos.com.ar

6. CAMERA ACCESS AND VIDEO ACCREDITATION

According to Art.3.4 of the FIM Statutes, the FIM is the sole owner of the Media rights for the FIM International Six Days of Enduro. The FIM delivers and sells the footage & videos produced by FIM TV.

In order to guarantee the standards of the FIM World Championships images, the FIM gives priority to providing footage filmed and videos produced by FIM TV. The deadline to order a FIM ISDE Video product is **22 September 2023**.

FMNs with at least one of the Trophy's categories registered can benefit with one Video Accreditation including a Camera Access for free. In any case. the Camera Access will be subject to Video Accreditation in due-time. The FMNs can request additional Camera Access following the proper procedure.

Any other third parties (including Club Team Awards) willing to receive a Video Accreditation including a Camera Access must follow the proper procedure and will be subject to an additional fee.

The Video Accreditation process for the 2023 FIM ISDE will open from 9 August 2023 at <https://fim-isde.com/tv-video-accreditation/>

FIM Marketing & Digital Director:
Fabio MUNER
+41 22 950 95 00
fabio.muner@fim.ch



7. ACCOMODATION & CAR RENTAL

The province of San Juan offers a wide variety of hotels for visitors to enjoy their stay.

For further information and solutions for your accommodation, as well as suggestions for tours, and car rentals you can contact: Altamarca Viajes.

Contact person: Sabrina CALAMARA
E-mail: sabrina@altamarca.eu
Phone: +54 911 3017 4593

8. SHIPPING & LOGISTIC

Waiver Logistics has been appointed as the Official Freight Forwarder to carry out the customs and logistic coordination for the event. There are different alternatives to move your cargo; by sea, air and land and different documents that must be presented to comply with the temporary import process for non-consumable goods.

We recommend contacting Waiver Logistics to ensure the safe and timely arrival of your cargo. For more information, please contact:

Nicolás ALBORNOZ
E-mail: nicolas.albornoz@waiver.com.ar
Phone: +54 911 35037359

Crane movement (unload or upload containers): USD 350.00. Only if the movement is done on these dates: 31st October to download (8 - 18 hs) - 13th November to upload (8 - 18 hs)

If the service is needed on other dates, please contact info@maseventos.com.ar to get a quotation.

9. RACING SERVICES AND OTHER SERVICES

Teams and riders have access to Official Racing Services (bike rental and assistance service) managed by the Enduro Manufacturer Factories in order to ease their logistic issues. Official Racing Services can be found at <https://fim-isde.com/racing-services-2023/>.

Further details on all other services can be found at: <https://fim-isde.com/others-services-2023/>.

10. PADDOCK

The paddock will be located at San Juan Villicum Circuit and will be open from 31 October 2023 at 12:00 to 13 November 2023 at 12:00.

GPS (Paddock entrance) : -31.3982552, -68.5674934 / <https://goo.gl/maps/Tnk9dbz3Cs31Vyji9>

PADDOCK OPENING HOURS:

- 31 October: 12:00 to 22:00.
- 1 November to 5 November: 07:00 to 22:00
- 6 November to Saturday 11 November: 05:30 to 22:00.
- 13 November: 07:00 to 12:00.



Each Structure (FMN or entity managing one or several Teams) will receive a surface in the paddock according to the number of riders they intend to register:

- 1,5 linear meters per rider.
- 12m in depth as a maximum.
- An extra surface behind each structure will be allocated to park teams assistance and staff vehicles. The exact depth will be notified at a later stage.

The Structure (FMNs or entity managing one or several Teams) are welcome to address their plan for the allocated paddock's surface to the Paddock Manager: cgonzalezrally@gmail.com

Each team' surface in the paddock will have access to water and electricity connections.

The power supplied (**) depends on the dimension of the surface allocated.

Structure / number of integrated teams	Paddock Surface	Electric Power
Structure with 1 team (3 to 4 riders for a World Trophy Team)	72 sqm: 6m linear x 12m	2 Kw
Structure from 2 teams to 4 teams (6-7 to 12-13 riders)	From 108 m2: 9m linear x 12m deep to 240 sqm: 20m linear x 12m deep	From 2Kw to 6 Kw
Structure from 5 teams to 9 teams (15-16 to 27-28 riders)	From 276 sqm: 23m linear x 12m deep to 504 sqm: 42 m linear x 12m deep	From 6 Kw to 8 Kw
Structure from 10 teams to 15 teams and beyond (30-31 to 45-46 riders and more)	From 540 sqm: 45m linear x 12m deep to 828 sqm: 69 m linear x 12m deep	From 8 Kw to 10 Kw

Information also available in: [Appendix 1 – Racing facilities included in rider registration fee.](#)

It is also possible to get a 380 v-three-phase electric alimentation included for free under 2 conditions: the structure must make the demand the latest on July 6,2023 and justify such kind of demand for the organizer to accept it. After July 6,2023, this possibility will not be accessible.

As the connections may be distant, it is up to the team to bring their own extension cords minimum 50m. For the type of connections required, please see [Appendix 2 – Technical requirements for electricity and water connections.](#)

Please note that the organizer will not supply extensions cords or connections. It will be possible to rent / buy those kinds of devices in the paddock via the service provider selected by the organizer.

In case a structure needs an additional surface in the paddock, it is possible to purchase it. Please see [Appendix 3 – Options for additional needs not included in rider registration fee.](#)

Rental of a Box at the Villicum Circuit: 350.- USD per week, please contact info@maseventos.com.ar Please note that Box are only used for material storage. It cannot be used for service.

PADDOCK RULES

- It is forbidden to stay at the paddock during the night, unless the vehicle in the paddock is equipped with the suitable facilities sleeping berth).
- Campers, camping cars, etc. are not allowed in the Paddock. Those vehicles category have to park in the paddock B or to a suitable camping area to benefit from comfort and all facilities, the one proposed in the paddock B will be limited compared to a real camping.
- In the paddock it is authorized to pick sticks or nails, to drill. Teams must bring their own material to secure their structure.
- In the paddock (A and B) it is forbidden to use barbecue or similar items.



- It is possible to cook inside each allocated surface as long as the following 2 constraints are strictly respected:

1/ It is strictly forbidden to dump your waste waters on the ground. Failure in applying this rule will expose you to direct prosecution by the competent local authorities (environment police). Structures are invited to collect their waste waters via hoses of sufficient length to reach on of the waste water grid located in the paddock and indicated on the environmental map (to be published at a later stage).

2/ The structure electrical needs must not overcome the allocated power supplied. In case of anticipated additional needs, the structure has to make the demand to the organizer for additional surface / power supply by 26 August 2023 the latest (see Appendix 3). After this deadline the organizer will not be able to answer to additional needs and the structure will have to adapt with the pre-defined level of power supplied.

- In case a structure needs a specific hospitality area independent from the racing structure, this service is not included in the registration fee. It is necessary to contact the organizer / paddock manager (cgonzalezrally@gmail.com and fim.mkt.consultant@gmail.com) to express their needs. A fee will be calculated accordingly and proposed to the concerned Structure. This fee must be accepted and paid by 26 August 2023 the latest.

After the Pre-Registrations, the Structure will be requested to fill a document concerning their needs in the Paddock and the number and team names managed. This document must be sent back by email to cgonzalezrally@gmail.com by 7 August 2023 the latest.

There will not be charges for Teams bringing their own racing / assistance service for the riders they manage as long as it is not a commercial activity; E.g. a Structure or Team selling assistance service or bike rental to riders wherever they are coming from.

For any commercial or marketing activities:

- Please contact the FIM Marketing Consultant (fim.mkt.consultant@gmail.com) and the Paddock Manager (angelocontini@maseventos.com.ar)
- Bike and tyre Manufacturers must be in possession of a valid FIM Manufacturer's Licence.

11. PARC FERME

The Parc Fermé will be located at **San Juan Villicum Circuit**.

Environmental Mat:

Each participant must bring their own environmental mat to protect the ground in the Parc Fermé.

The environmental mat must remain in the Parc Fermé for the duration of the event.

In case the FIM and/or the Local Organiser supply environmental mats in the Parc Fermé with a free rental solution during the Event, it will be compulsory for all the riders to use the solution provided. After the end of the Event, the environmental mats supplied remains the property of FIM and/or the Local Organiser who may propose a fee for the riders to purchase the environmental mat supplied as a souvenir.

If such a case arise FIM will inform all the team and riders on 4 August 2023 the latest.

Outside of the Parc-Fermé (paddock structure, working area and service time check), FMNs, Teams and riders are free to use their own environmental mat.

Anti-theft system:

The motorcycles in the Parc Fermé must be equipped in addition to any existing system, with an individual anti-theft system (padlocked chain, disc block)



If a rider cannot open the anti-theft system in the parc fermé, under the control of the Technical Steward, the rider will be authorised to use all the appropriate tools made available by the Local Organiser to unlock the anti-theft system. If this intervention does not allow the rider to start at his ideal time, another starting time will be offered to him without time penalty.

12. ADMINISTRATIVE INSPECTION

The Federations must enter the riders' complete details (FIM license number, insurance, etc.) via the online application provided by the FIM by the **6 September 2023** the latest. All FMNs should make their best effort to fill completely the application forms as soon as possible, so that the FIM and Local Organiser can promote efficiently their participating teams and riders. For memo some basic information are required before Pre-registration deadline (see point 2).

The administrative inspection will take place in **San Juan Villicum Circuit**, on 3 November 2023 from 8:30 to 18:00 and on Saturday 4 November 2023 from 8:30 to 17:00. If necessary, remaining riders will be attended on 5 November from 08:30 to 12:00.

The LATAM countries will have to pass the Administrative Inspection on Saturday and Sunday morning. All other countries will have to pass the Administrative Inspection on Friday and Saturday.

Insurance Overseas motorcycles:

The Local Organiser will provide a policy, but the Motorcycles must have to be registered in their country (Europe, Africa, Australia, New Zealand, Chili etc.).

To get insurance they must have vehicle registration papers and original registration plate, otherwise the motorcycles cannot be insured.

The original number plate must be fixed on the rear mud guard.

Incoming temporary insurance policies rates:

	Valid for 15 days	Valid for 30 days
Motorcycles	EUR 15.00	EUR 30.00

The timetable of the administrative inspection for each country will be posted on the ISDE official website and issued at the ISDE Secretariat on 1 November 2023.

Riders' requirements and documents needed for the administrative inspection:

- FIM license issued for this event,
- Valid driving license,
- Passport (or ID card),
- Entry fee total payment confirmation,
- Filled-in organiser's form given to the team managers or delegates during accreditation,
- Original registration certificate of the bike (with frame number) and the vehicle registration plate,
- The international insurance certificate of the motorbike used for the competition valid for Argentina, in accordance with the requirements of the Argentina law. The validity for Argentina and the compliance with the requirements of the insurance code must be explicitly written on the document presented.

Should the rider not to have a valid insurance certificate meeting the 2 criteria above mentioned, The Local Organiser requires the bike to be registered with an Argentina insurance company (at the expense of the rider). The Organiser will propose an insurance with the possibility of subscribing on the event at the conditions mentioned in the previous paragraph "insurance overseas motorcycles".

The riders must also sign the signing-on form at the administrative inspections.



At the administrative inspection, the FMNs or Structure integrating one or several Club Teams will receive the following passes. Please note that according to articles 4 and 5 the media and camera pass delivery are subject to the conditions expressed in those 2 articles.

Passes quota depending on team categories and number of teams / riders inside the structure

VEHICLES PASSES				
Team category / Vehicle pass category	Assistance	Team	Surface at each STC	Assistance bike
Trophy Team				
1 World Trophy team	4	3	30 sqm: 6m linear x 5m deep	2
1 Junior Trophy team	4	2	30 sqm: 6m linear x 5m deep	2
1 Women Trophy team	4	2	30 sqm: 6m linear x 5m deep	2
2 Trophy teams : 1 World Trophy team + 1 Junior ou Women Trophy team	4	5	45 sqm: 9m linear x 5m deep	5
2 Trophy teams : 1 Junior Trophy team + 1 Women Trophy team	4	4	45 sqm: 9m linear x 5m deep	4
3 Trophy teams (World + Junior + Women)	5	6	60 sqm: 12m linear x 5m deep	7
Club Team Award				
Structure de 1 team à 4 teams (3 à 12 pilotes)	4	2	30 m2 : 6m linéaires x 5m	1
Structure de 5 teams à 9 teams (15 à 27 pilotes)	4	4	45 m2 : 9m linéaires x 5m	1
Structures de 10 teams à 15 teams (30 à 45 pilotes)	8	6	60 m2 : 12m linéaires x 5m	1
Structures de 16 teams et plus (48 pilotes et plus)	8	8	90 m2 : 18m linéaires x 5m	1

RIDERS PASSES: 1 per registered rider

TEAMS STAFF PASSES					
Team category / Person pass category	Team Manager	Mechanic	Staff	Media	Camera
Trophy Team					
1 World Trophy team	1	5	12	2	1
1 Junior Trophy team	1	4	10		
1 Women Trophy team	1	4	10		
2 Trophy teams : 1 World Trophy team + 1 Junior ou Women Trophy team	2	7	16		
2 Trophy teams : 1 Junior Trophy team + 1 Women Trophy team	2	7	14		
3 Trophy teams (World + Junior + Women)	3	11	20		
Club Team Award					
Per Club Team Award	1	3	0	0	0

Information also available in: [Appendix 1 – Racing facilities included in rider registration fee.](#)

For accesses and areas granted by the above team passes please see: [Appendix 4 – Passes Accesses display.](#)

In case of additional needs, beyond the allocated quota, The FMNs and Structures can purchase supplementary passes, please see: [Appendix 3 – Options for additional needs not included in rider registration fee.](#)

For the Final Cross Test on Day 6 / Saturday 11 November 2023: the access to Final Cross Test is free for riders and staff members with any team staff pass

The Final Cross Test will be subject to ticketing for spectators. The ticket price (less than 10 EUR, 5 EUR as a minimum), will be precise by the Local Organiser at a later stage.



13. TECHNICAL INSPECTION

The technical inspection will take place inside the paddock according to the following schedule:

Date	Time
3 November 2023	10:30-19:00
4 November 2023	8:30-18:00
5 November 2023	08:30-13:00

The timetable of the technical inspection for each country will be posted on the ISDE official website on 27 October 2023 and issued at the ISDE Secretariat on Tuesday 31 October 2023 at 12:00.

The LATAM countries will have to pass the Technical Inspection on Saturday and Sunday morning. All other countries will have to pass the Technical Inspection on Friday and Saturday.

Requirements and documents needed for the technical inspection:

- **Original registration certificate of the bike (with frame number) and the original vehicle registration plate fixed on the bike**

The motorcycles have to be in conformity with the Articles 061.41, 061.42, 061.43 and 061.44.

It is strongly recommended for rider to be equipped at the start of each day with a filled hydration bag and to refilled it regularly on the Service Time Check. The weather conditions can be quite hot. Moreover, depending on the local authorities, an anti-hot weather plan could be activated and make the use of hydration bag compulsory. In such a case, the FIM and organizer will inform the rider via an updated version of the present Supplementary Regulations.

14. CLASSES

The classes of the ISDE for solo motorcycles are:

- **Enduro 1:** Up to 250cc 2 stroke and 4 stroke
- **Enduro 2:** From 255cc to 450cc 4 stroke
- **Enduro 3:** Over 255cc 2 stroke and over 455cc 4 stroke

Any motorcycle coming within classes of Category 1, Group A1 and Category 2, Group C shall be eligible for entry.

15. PRACTICE AREA / OFFICIAL TRAINING AREA

The practice area will be located at **1 km from the Paddock at San Juan Villicum Circuit.**

Its access will be duly signed, and internal direction will be signed with ribbons and arrows. It will be open from 1 to 5 November 2023 from 8:00 to 12:00 (To be confirmed).



16. ADVERTISING

It is strictly forbidden to place any advertising (banners, balloons, boards, flags, etc.) at the ISDE venue (secretariat, paddock area, parking lots, special test tracks, official route and any other places related to the event).

FMNs and Structures integrating one or several Club Teams are free to display advertising in the allocated places in the paddock, working area and service time checks under the conditions described thereafter.

Vertical branding (beach flags, pole on structures' top / roof, inflated tools) and horizontal branding (banners on the perimeter of the structure, oil barrels) are only authorized for the materials including the following element: country flag, FMN logo, Moto Club logo OR mixed materials with at least minimum 30% of the surface with team name (or country logo, FMN logo, Moto Club logo) and 70% maximum of the remaining area with the team's partners logo.

In no case the vertical or horizontal materials composed with only one sponsor brand are authorized.

Inside the structure perimeter, the branding is free.

17. ENVIRONMENT

Each rider must be equipped with an environmental mat under the motorcycle compliant with the FIM Environmental Code (Article 4.1 Environmental Mat).

A working fire extinguisher is mandatory at each service area.

18. NUMBER PLATES AND STARTING ORDER

Number plates and starting order will follow the FIM regulations.

The whole number plates surface, front and sides is reserved to the FIM and the Local Organiser. No additional branding or hiding a part of the plate number surface is allowed.

FIM will supply 7 August 2023 the latest the files (PDF HD format) of the official templates of the number plates stickers for the different categories (WT, JWT, WWT and CTA): Guidelines available on <https://fim-isde.com/noticeboard/>

In any case, each rider will receive during the Administrative Inspection the 3 number plates stickers (one front, 2 sides) corresponding to his category.

19. OPENING CEREMONY

The Opening Ceremony will take place in **San Juan Villicum Circuit** on Saturday 4 November at 19:00. The Local Organiser will give precise instructions and running order for the nation's parade and activities during the ceremony.

During the parade and in the welcome zone in front of the stage, FMN, Teams, Clubs are encouraged to show their colours (flags, etc.). No commercial items (commercial brand flags or any other material) are allowed. It is compulsory for all the participants to stay in the welcome zone in front of the stage, from the start to the end of the official ceremony.



20. COURSE

The race will start on 6 November 2023 and finish on Saturday 11 November 2023.

The total length of the course, including special tests, will be around 1 500 kms.

From day 1 to day 5, the riders will do 3 special tests per lap, 2 laps each day.

On day 6, the riders will do several laps of the Final Cross Test, the precise number will be communicated at the end of the day 5.

There will be a maximum of 2 Service Time Checks (STC) out of the paddock with only 2 different spots as 2 STC will be double: the first and fifth STC on each day and the second and third or fourth STC depending on the days. For double STC, the riders will arrive by the same corridor, so the assistance' structure will not have to move.

Each FMN / Structure managing one or several Club Teams benefits from a surface on each spot of Service Time Checks depending on the number of teams and riders managed: please refer to [Appendix 1 – Racing facilities included in rider registration fee.](#)

Important information:

It is not allowed to walk or ride the test earlier than 8 days before the start of the ISDE (29 October 2023). Any infringement of this rule, in advance of the timed test, if it is reported to, and accepted and confirmed by the Race Direction that a rider was observed walking or riding a Special Test before the allotted time for doing so, that rider may be is liable for Penalty under the FIM Disciplinary and Arbitration Code. The sanction must be proportional to the offence, and to the circumstances (attenuating or aggravating if applicable) and taking account of any possible advantage gained by the rider.

21. HIGHWAY CODE FOR OPERATION ON PRIVATE HIGHWAYS AND PUBLIC ROADS

All riders and participants in the contest must respect the national traffic code for operation on all public and private roads and road crossings. They must conform to all instructions that are given by police, by the traffic marshals and by the race management. Riders failing to observe these instructions may be disqualified from the contest or face other penalties of the sporting code.

22. FUEL AND TYRES

Any fuel used must be in conformity with the article 01.63 of the FIM Technical Regulations for Enduro.

All tyres used on the competition motorcycles must comply with the article 01.51 of the FIM Technical Regulations for Enduro.

There'll be available fuel on the paddock.

The Organisation will provide a fuel service option both in the Paddock and in the Service Time Checks areas out of the paddock. Riders and teams wishing to contract this service may do so by contacting Competitors Service (mail: info@maseventos.com.ar).

The prices of this service (subject to fuel price) will be communicated on the 6 October the latest.



23. INTERPRETATION OF REGULATIONS AND RULES

The interpretation of the FIM regulations and rules for ISDE and of the supplementary Regulation approved for this event is in the competency of the sporting jurisdiction approved by the FIM for this event.

24. CLOSING CEREMONY AND AWARDS

The prize-giving ceremony will take place on the podium after the Final Cross Test of the ISDE, Saturday 11 November.

The prize giving ceremony will be splits in 2 key moments:

- End of the Morning, around noon: brand challenges and Club Team Awards ceremony.
- End of the Afternoon, not later than 5 pm: Trophy categories and other awards.

25. 6DAYS PARTY

After the Closing Ceremony and Awards on Saturday 11 November 2023, the 6Days Party will be organize in San Juan city-center.

All riders, teams and staff are welcome to celebrate, as for as the Final Cross Test, the 6Days Party access will be free for riders and any staff pass holder.

Further details will be communicated at a later stage.

26. INSURANCE

The insurance of the participants is regulated by the provisions of Article 110.1.1 and 110.3 of the FIM Sporting Code and Article 061.65 of the FIM ISDE Regulations.

27. TRANSPONDERS

Transponders will be distributed before entering the Parc-Fermé according to the timetable assigned to each country for proceeding with the technical inspection.

Riders will be able to buy transponder holders at the administrative office.

The riders having lost or forgotten their transponder will pay an amount of EUR 250.00.

The transponders will be collected back by the Local Organiser at the end of the race on the exit of the Final Cross Test.



28. OFFICIALS

FIM Representative:	Jorge Viegas, FIM President		
CEN Representative:	John Collins, CEN Director		
Stewards			
FIM Chief Steward:	Heinrich Schmidt	FIM Licence:	14509 / 4469
2 nd FIM Steward:	José Tomas Diaz	FIM Licence:	15354 / 16690
FMNR Steward:	Alfredo Yoma	FIM Licence:	tbc
Race Direction			
FIM Race Director:	Pedro Mariano	FIM Licence:	15173 / 16778
FIM Course Inspector:	Maurizio Micheluz	FIM Licence:	15178 / 4464
Clerk of the Course:	Erick Nevels	FIM Licence:	tbc
Assist. Clerk of the Course:			
Technical Delegates			
FIM Technical Director:	Andres Zalazar	FIM Licence:	14920
FIM Technical Director:	Roger Johansson	FIM Licence:	14557
FMNR Chief Technical Steward:	Tbc	FIM Senior Licence:	tbc
FMNR Technical Steward:	Leonardo Yoma	FIM Licence:	14919
Delegates			
FIM Medical Delegate:	Juan Crespo	FIM Licence:	14876
Chief Medical Officer:	Marcelo Acevedo	FIM Licence:	15895
FIM Environmental Delegate:	Ovidio Morales	FIM Licence:	14805
FMNR Environmental Steward:	Patricia Zimerman	FIM Licence:	17072
FMNR Safety Steward:	Carlos Borrione		
Timekeeper:	Fabio Di Meo - FICR		
Press Officer:	Belén Otero		
Secretary of the Event:	Julieta Uliana		
Secretary of the Jury:	Dalia Torres Bravo		

Representing FIM	
CEN Director	John Collins
CEN Coordinator	Gregory Ricci
FIM Communication Manager	Isabelle Lariviere
FIM Marketing and Digital Director	Fabio Muner
FIM Marketing Coordinator	Martin Z'Graggen
Marketing and TV Manager	Michele Bianchi



29. OFFICIAL NOTICE BOARD / SPORTITY APP

The organizers will employ the use of Sportity mobile app to host all the sporting documents for the entire event. Please enable notifications on the app after you install it to ensure you receive the latest notifications when documents are uploaded. A token that all competitors can use to access the event Channel will be available at the Administrative control.

There will be no physical Official Notice Board at the ISDE HQ. The Official Notice Board is the SPORTITY Application.

Download the App

The banner features a purple and pink background with the Sportity logo at the top left. The text reads: "For direct event information please download the Sportity app and insert this password: ISDE2023". Below the password is a white rounded rectangle containing the text "ISDE2023". At the bottom, it says "Sportity app is available in" followed by "Available on the App Store" and "Get it on Google play" buttons. Two QR codes are provided for scanning. The website "www.sportity.com" is listed at the bottom left.



APPENDIX 1

RACING FACILITIES INCLUDED IN RIDER REGISTRATION FEE

Paddock surface allocated to the Structure (FMN or other structure welcoming 1 or several teams) depending on the number of riders and teams within the Structure (1,5m linear / rider x 12m deep) and power supplied depending on the allocated surface.

Access to 380V (tree phase) is included under condition to send and justify the request to the Organizer by July 6, 2023 the latest. After this deadline, the structure will not be able to benefit from 380V.

Structure / number of integrated teams	Paddock Surface	Electric Power
Structure with 1 team (3 to 4 riders for a World Trophy Team)	72 sqm: 6m linear x 12m	2 Kw
Structure from 2 teams to 4 teams (6-7 to 12-13 riders)	From 108 m2: 9m linear x 12m deep to 240 sqm: 20m linear x 12m deep	From 2Kw to 6 Kw
Structure from 5 teams to 9 teams (15-16 to 27-28 riders)	From 276 sqm: 23m linear x 12m deep to 504 sqm: 42 m linear x 12m deep	From 6 Kw to 8 Kw
Structure from 10 teams to 15 teams and beyond (30-31 to 45-46 riders and more)	From 540 sqm: 45m linear x 12m deep to 828 sqm: 69 m linear x 12m deep	From 8 Kw to 10 Kw

Passes quota depending on team categories and number of teams / riders inside the structure

VEHICLES PASSES				
Team category / Vehicle pass category	Assistance	Team	Surface at each STC	Assistance bike
Trophy Team				
1 World Trophy team	4	3	30 sqm: 6m linear x 5m deep	2
1 Junior Trophy team	4	2	30 sqm: 6m linear x 5m deep	2
1 Women Trophy team	4	2	30 sqm: 6m linear x 5m deep	2
2 Trophy teams : 1 World Trophy team + 1 Junior ou Women Trophy team	4	5	45 sqm: 9m linear x 5m deep	5
2 Trophy teams : 1 Junior Trophy team + 1 Women Trophy team	4	4	45 sqm: 9m linear x 5m deep	4
3 Trophy teams (World + Junior + Women)	5	6	60 sqm: 12m linear x 5m deep	7
Club Team Award				
Structure de 1 team à 4 teams (3 à 12 pilotes)	4	2	30 m2 : 6m linéaires x 5m	1
Structure de 5 teams à 9 teams (15 à 27 pilotes)	4	4	45 m2 : 9m linéaires x 5m	1
Structures de 10 teams à 15 teams (30 à 45 pilotes)	8	6	60 m2 : 12m linéaires x 5m	1
Structures de 16 teams et plus (48 pilotes et plus)	8	8	90 m2 : 18m linéaires x 5m	1

RIDERS PASSES: 1 per registered rider

TEAMS STAFF PASSES					
Team category / Person pass category	Team Manager	Mechanic	Staff	Media	Camera
Trophy Team					
1 World Trophy team	1	5	12	2	1
1 Junior Trophy team	1	4	10		
1 Women Trophy team	1	4	10		
2 Trophy teams : 1 World Trophy team + 1 Junior ou Women Trophy team	2	7	16		
2 Trophy teams : 1 Junior Trophy team + 1 Women Trophy team	2	7	14		
3 Trophy teams (World + Junior + Women)	3	11	20		
Club Team Award					
Per Club Team Award	1	3	0	0	0

APPENDIX 2

TECHNICAL REQUIREMENTS FOR ELECTRICITY (TBA)



Single-phase + three-phase pre-equipped site box with emergency stop

Boxes composition	
Blue single phase 230V/15A/230V socket with 1P+N or 2P+N plug of FIT	Red three phase 400V/32A/400V socket with 3P+N plug of FIT
Standard french plugs	
Protection class	IP65

3 possible plug types

<div style="background-color: #FF0000; color: white; padding: 2px; font-size: 8px;">Red 3P+N plug</div> <div style="background-color: #FF0000; color: white; padding: 2px; font-size: 8px;">FIT european plug</div> 	<div style="background-color: #0070C0; color: white; padding: 2px; font-size: 8px;">Blue 3P+N plug</div> <div style="background-color: #0070C0; color: white; padding: 2px; font-size: 8px;">FIT european plug</div> 	<div style="background-color: #808080; color: white; padding: 2px; font-size: 8px;">Plug 230V/15A/230V</div> <div style="background-color: #808080; color: white; padding: 2px; font-size: 8px;">Standard french plug</div> 
---	--	--

Type of accessories that the structures / beams must have	
	
+ 50 m minimum extension cord	



APPENDIX 3

RACING FACILITIES NOT INCLUDED IN RIDER REGISTRATION FEE

RIDER REGISTRATION FEE DOES NOT INCLUDE THE FOLLOWING SERVICES

As a principle, all that is not indicated as included in the rider registration fee (E.g. but not limited to: fuel, spare parts, consumable items, travel and accommodation expenses) is not included in the rider registration fee.

Additional insurance cost for out of Europe registered motorcycle

*Riders or assistances registered motorcycles must be insured in Argentina.
The motorcycles must be registered in their home country, the plate fixed on the rear mudguard and the documents attesting the registration must be supplied.
Providing to the extent that those conditions are respected, the organiser will propose an insurance price (to be confirmed at a later stage).
For memo 2021's insurance price: for 15 days = EUR 60, for one month = EUR 100.*

Additional surface in the racing paddock, beyond de 1,5m linear / rider included in the registration fee

Additional Surface	Prices EUR VAT Incl.
3m linear x 12m deep, 36 sqm	700,00 €
6m linear x 12m deep, 72 sqm	1 200,00 €
12m linear x 12m deep, 144 sqm	2 000,00 €
20m linear x 12m deep, 240 sqm	4 000,00 €

Vehicle Team Passes beyond the allocated quota

Vehicle Team Pass (passenger car, light vehicle)	Prices EUR VAT Incl.
Pass per vehicle	300,00 €

Assistance motorcycle sticker plate pass beyond the allocated quota

*The service includes:
- 3 stickers supplied with a marking identifying clearly the motorcycle as integrated to the corresponding team assistance.
- This identification is compulsory to access to the different areas with limited access for vehicles, see Appendix 4 - Passes Accesses sheet.
The assistance rider must also have a person pass Team (Team Manager or Mechanic or staff or Media or Camera).*

Assistance motorcycle sticker plate pass	Prices EUR VAT Incl.
Pass per motorcycle	100,00 €

Person Pass Team - Staff beyond the allocated quota

Person Pass Team - Staff	Prices EUR VAT Incl.
Pass per person	100,00 €

Person Pass Team - Media / Camera beyond the allocated quota

*Demands for team camera and media passes are subject to FIM and Organiser prior approval.
Production and broadcasting rights for Trophy teams and riders promotional purposes are granted for free to the FMN and to the FMN or Structure managing one or several Club Teams. In no case the waver of those rights is entitled to broadcast or sell a partial or total content of a commercial nature and to grant them to any third party.
Please contact FIM TV Manager - Aurélie Grob for any additional information: aurelie.grob@fim.ch*

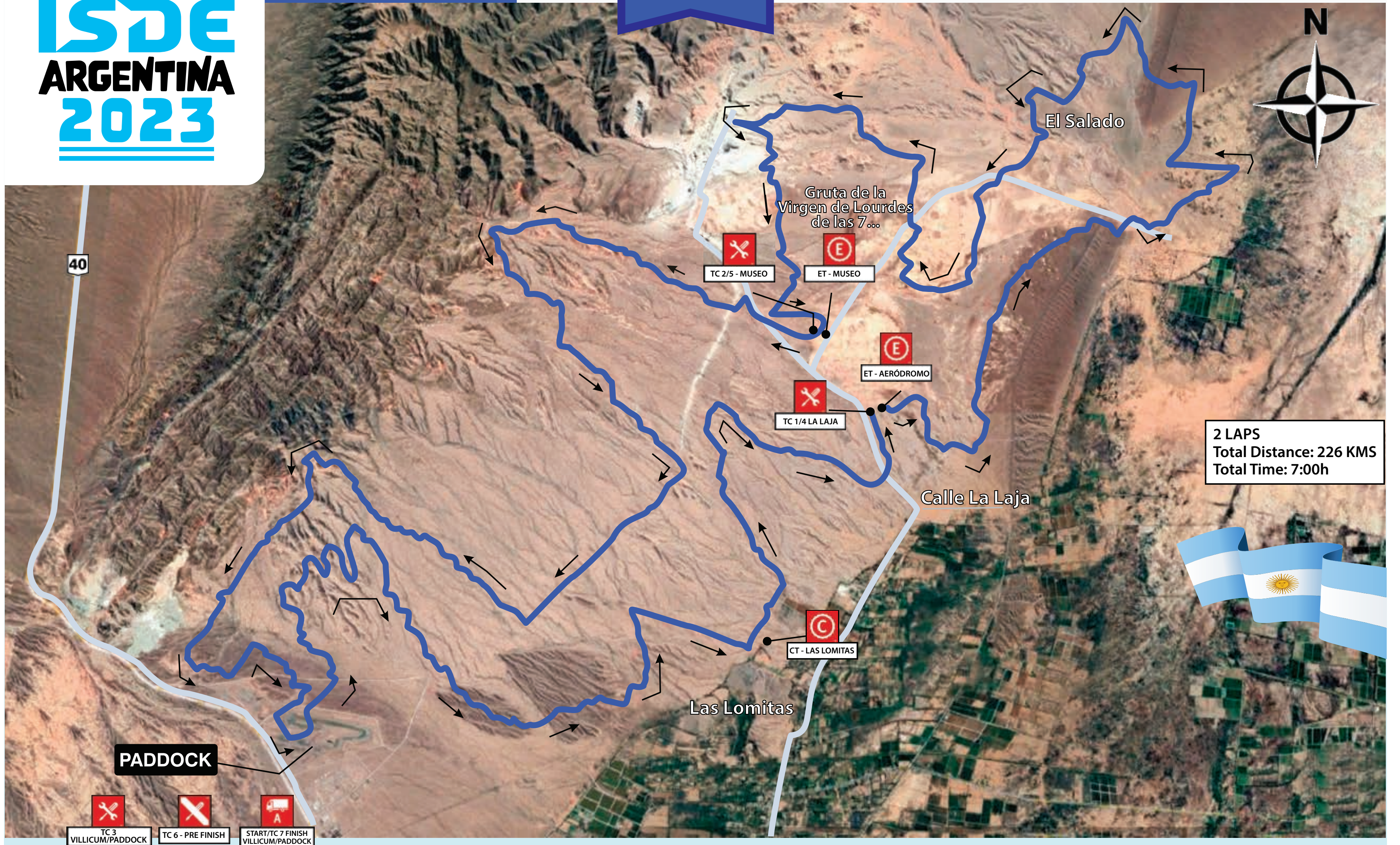
Person Pass Team - Media / Camera	Prices EUR VAT Incl.
Camera Pass per camera	<i>To be confirmed</i>
Media pass per person	<i>To be confirmed</i>



APPENDIX 4 PASSES ACCESSES DISPLAY

TEAM PASS FOR VEHICLES			
Areas / Pass Categories	Assistance	Team	Assistance Bike
Paddock: behind the allocated surface	OK	OK	OK
Service Time Check: in the reserved area for each structure	OK		OK
Start / Arrival areas in the Special Tests			OK
Official Parkings: Paddock and Special Tests		OK	OK

TEAM PASS FOR PERSONS						
Areas / Pass Categories	Rider	Team Manager	Mechanic	Staff	Media	Camera
Team Structure in the Paddock	OK	OK	OK	OK	OK	OK
Parc Fermé	OK					
Working Area	OK	OK	OK		OK	OK
Service Time Check: in the reserved area for each structure	OK	OK	OK	OK	OK	OK
Start / Arrival areas in the Special Tests	OK	OK	OK	OK	OK	OK
Press Room					OK	OK



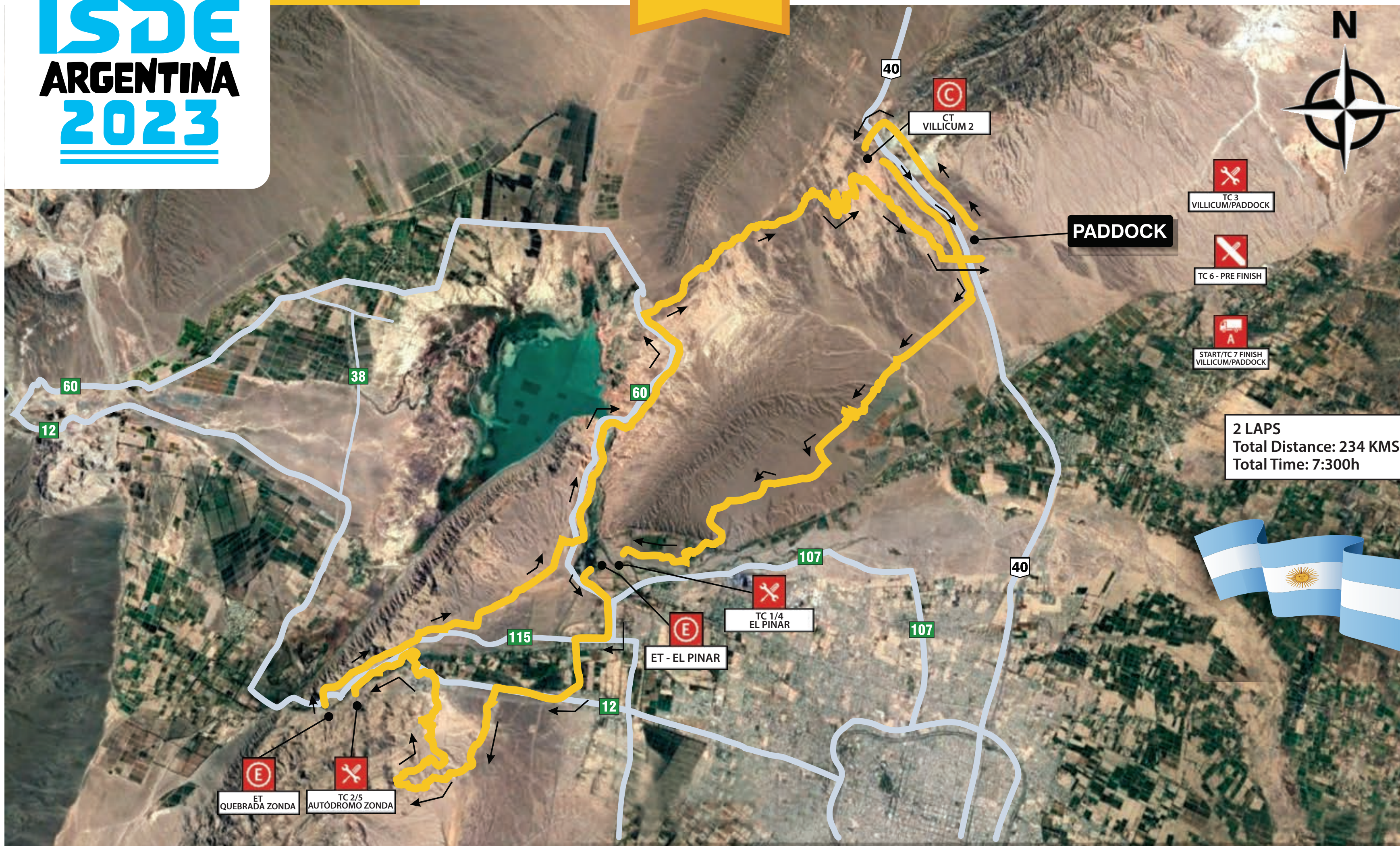
2 LAPS
Total Distance: 226 KMS
Total Time: 7:00h



PADDOCK

- TC 3 VILLICUM/PADDOCK
- TC 6 - PRE FINISH
- START/TC 7 FINISH VILLICUM/PADDOCK





2 LAPS
Total Distance: 234 KMS
Total Time: 7:30h